



UP TO 4,432 SQ FT AVAILABLE
FOR LEASE

RETAIL | HIGH QUALITY RETAIL UNIT LEASE OPPORTUNITY

ASPEN MARKET

110 KALRA STREET, SASKATOON



PROPERTY DETAILS

\$34.00

Asking Price, PSF

\$13.50*

2026 Est. Occupancy, PSF

Fall 2026

Availability

District:	Aspen Ridge
Zoning:	B4MX (<i>Integrated Commercial Mixed-Use</i>)
Parcel #:	203542725
Site Size:	1.53 Acres
Total Rentable Area:	± 1,332 - 4,432 SF (CRU B)
Parking:	Ample paved parking common to site
Heating/HVAC:	HVAC partial distribution in place

HIGHLIGHTS

- 3 High quality CRU buildings for lease
- Total building(s) sizes: CRU B - 4,432 SF
- Located along McOrmond Rd at Kalra Street & McOrmond Drive
- Current tenants: YWCA Day Care
- Available Fall 2026
- *CRU A (5,273 SF) and CRU C (6,783 SF) available Fall 2027



LEAD AGENT

SCOTT FRIESEN

President / Broker

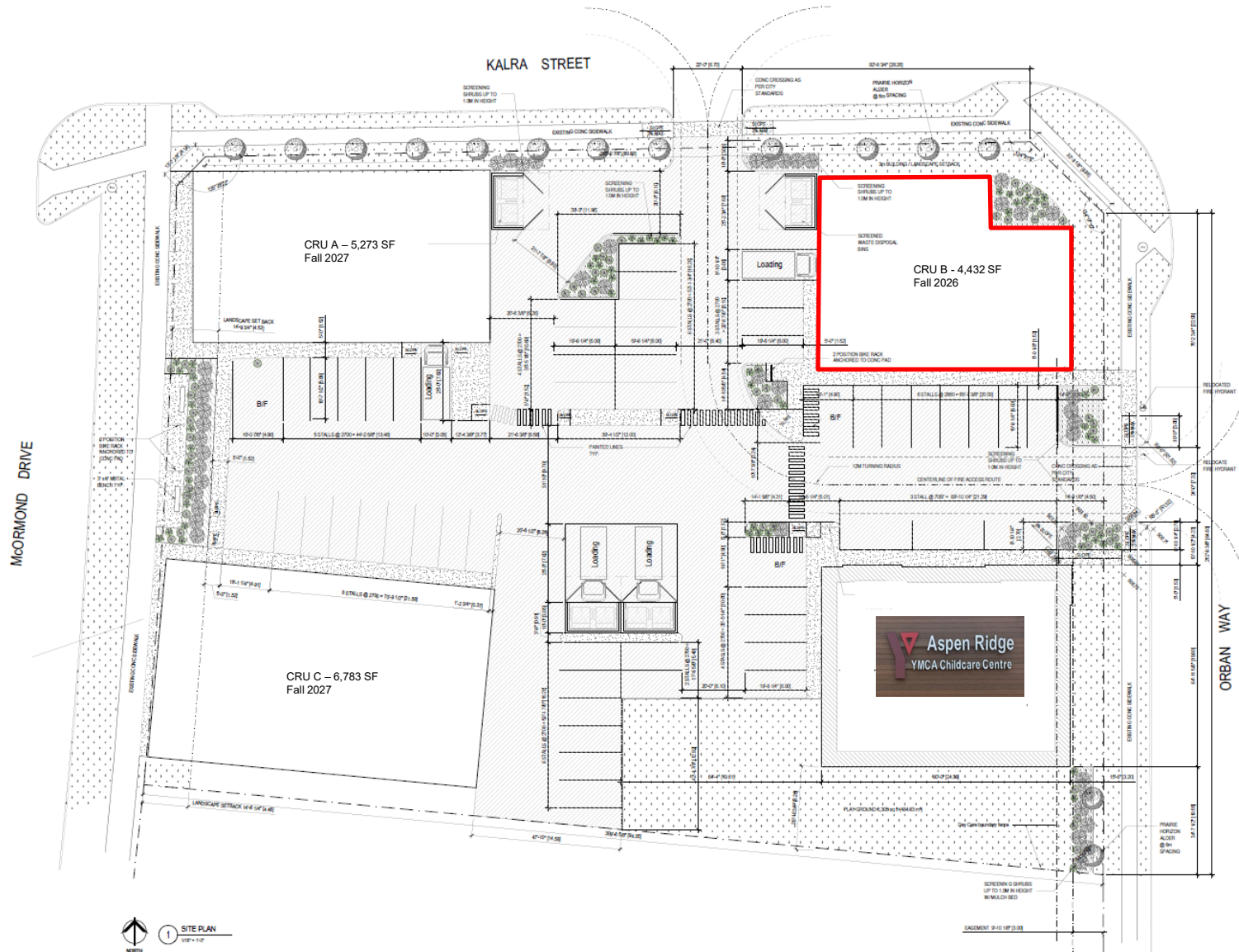
1-306-934-3377

scott.friesen@cwsaskatoon.com

 **CUSHMAN & WAKEFIELD**
Saskatoon

SITE PLAN

FOR LEASE | 110 Kalra Street Saskatoon SK

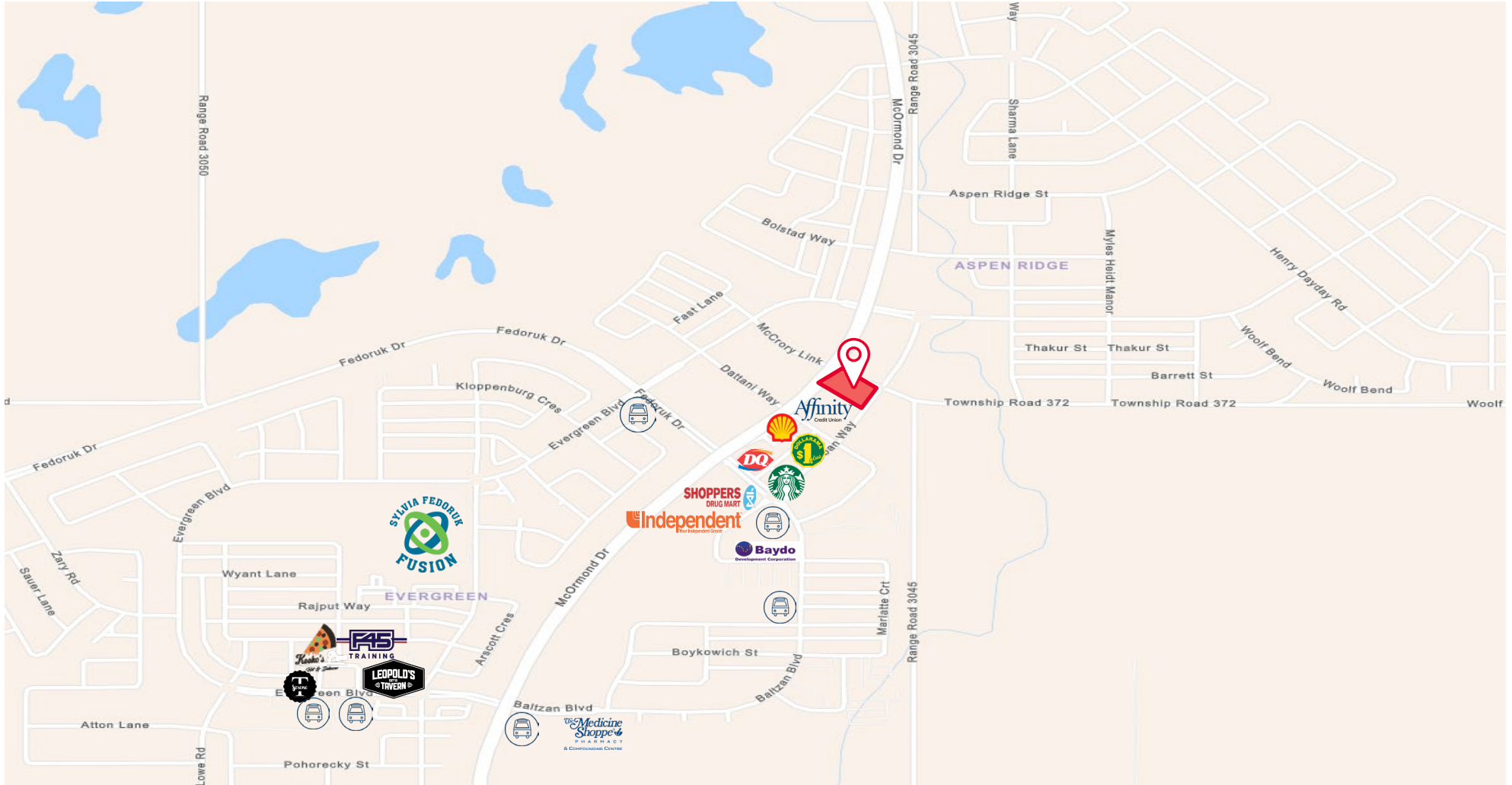


*Not to scale, not exactly as shown.

NEIGHBOURHOOD PROFILE

EVERGREEN | ASPEN RIDGE

FOR LEASE | 225 Payne Bend, Saskatoon SK



- Accommodates mixed-use development and blends residential, commercial and institutional activities into a District Village where residents can work, play, live and shop

- Proximity to 6 transit stations
- Access to new Chief Mistawasis Bridge
- 20 minutes to Downtown Saskatoon

SURROUNDING RESIDENTIAL NEIGHBORHOODS

Evergreen

- 655 acres
- 12,622 projected population
- 2,021 single family units
- 3,691 units

Aspen Ridge

- 638 acres
- 13,120 projected population upon completion

Willowgrove

- 544 acres
- 8,420 population
- 1,715 single family units
- 1,120 multi units

Silverspring

- 442 acres
- 5,164 population
- 1,317 single family units
- 362 multi units

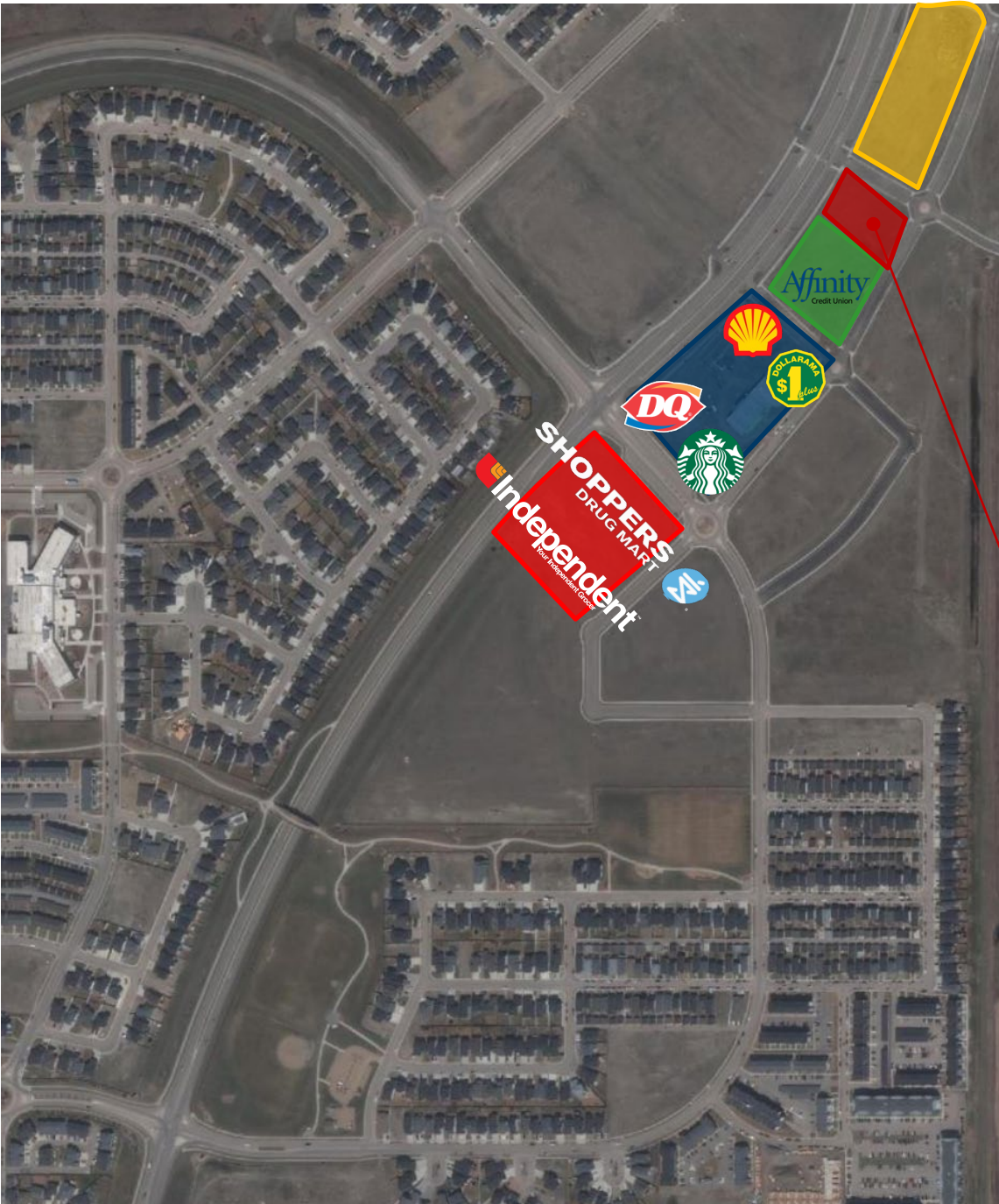
Aspen Market

- 3 High quality CRU buildings for lease
- Total building(s) sizes: 6,783 SF, 5,273 SF, 4,432 SF
- Located along McOrmond Rd at Kalra Street & McOrmond Drive
- Current tenants: YWCA Day Care
- CRU B Available Fall 2026



LOCATION

FOR LEASE | 225 Payne Bend, Saskatoon SK



NORTH PRAIRIE TOWNHOMES

- Bellatowns in Evergreen
- 120 townhome units
 - 2-3 Bedroom & Garage
- The Moet I - The Moet II
 - 100 townhome units (2-3 Bedroom & Garage)

SEYMOUR PACIFIC

- Juniper gardens
- 162 rental units (1-2-3 Bedroom)
 - Phase 2: 116 rental units
- Evergreen Bend
- 204 rental units

BAYDO

- Multi-family
- 154 rental units (1-2-3 Bedroom)
- Five - 6 storey Residential Towers
- Baydo Plaza

AVANA

- Aspen Ridge - Evergreen
 - Baltzan Blvd & Orban Way
- 300+ townhome units (1-2-3 Bedroom)

AREA FEATURES

- Prime traffic exposure
- New anchoring development
- Residential growth
- High-visibility, accessible location
- Walkability and anchored services
- Complete-community appeal
- 4 Elementary Schools nearby
- 3000 plus occupants within 6 block radius of Evergreen Crossing Shopping Centre





SCOTT FRIESEN

President / Broker

[1-306-934-3377](tel:1-306-934-3377)

scott.friesen@cwsaskatoon.com

MATT PRIEL

Senior Sales Associate

[1-306-261-2375](tel:1-306-261-2375)

matt.priel@cwsaskatoon.com

OFFICE

[1-306-934-3377](tel:1-306-934-3377)

info@cwsaskatoon.com

CUSHMAN & WAKEFIELD SASKATOON
A LOCAL FIRM WITH GLOBAL REACH

215-350 3rd Avenue North
Saskatoon, SK S7K 2J1
cushmanwakefieldsaskatoon.com

©2024 Cushman & Wakefield. All rights reserved. The information contained in this communication is strictly confidential. This information has been obtained from sources believed to be reliable but has not been verified. NO WARRANTY OR REPRESENTATION, EXPRESS OR IMPLIED, IS MADE AS TO THE CONDITION OF THE PROPERTY (OR PROPERTIES) REFERENCED HEREIN OR AS TO THE ACCURACY OR COMPLETENESS OF THE INFORMATION CONTAINED HEREIN, AND SAME IS SUBMITTED SUBJECT TO ERRORS, OMISSIONS, CHANGE OF PRICE, RENTAL OR OTHER CONDITIONS, WITHDRAWAL WITHOUT NOTICE, AND TO ANY SPECIAL LISTING CONDITIONS IMPOSED BY THE PROPERTY OWNER(S). ANY PROJECTIONS, OPINIONS OR ESTIMATES ARE SUBJECT TO UNCERTAINTY AND DO NOT SIGNIFY CURRENT OR FUTURE PROPERTY PERFORMANCE.